

# Chloroplast genome of *Tillandsia marconae* till & Vitek (Bromeliaceae), a hyperarid desert endangered species

Julio César Chávez-Galarza, Stefanny Cardenas-Ninasivincha, Roberto Contreras, Rubén Ferro-Mauricio & Wilson Huanca-Mamani

To cite this article: Julio César Chávez-Galarza, Stefanny Cardenas-Ninasivincha, Roberto Contreras, Rubén Ferro-Mauricio & Wilson Huanca-Mamani (2021) Chloroplast genome of *Tillandsia marconae* till & Vitek (Bromeliaceae), a hyperarid desert endangered species, Mitochondrial DNA Part B, 6:9, 2562-2564, DOI: [10.1080/23802359.2021.1944364](https://doi.org/10.1080/23802359.2021.1944364)

To link to this article: <https://doi.org/10.1080/23802359.2021.1944364>



© 2021 The Author(s). Published by Informa UK Limited, trading as Taylor & Francis Group.



Published online: 08 Aug 2021.



Submit your article to this journal [↗](#)



Article views: 461



View related articles [↗](#)



View Crossmark data [↗](#)

## Chloroplast genome of *Tillandsia marconae* till & Vitek (Bromeliaceae), a hyperarid desert endangered species

Julio César Chávez-Galarza<sup>a,b</sup>, Stefanny Cardenas-Ninasivincha<sup>c</sup>, Roberto Contreras<sup>d</sup>, Rubén Ferro-Mauricio<sup>a</sup> and Wilson Huanca-Mamani<sup>c</sup>

<sup>a</sup>Laboratorio de Investigación Tecnológica en Cambio Climático, Instituto Nacional de Innovación Agraria, Lima, Perú; <sup>b</sup>Departamento Académico de Ciencias Básicas y Afines, Universidad Nacional de Barranca, Barranca, Perú; <sup>c</sup>Laboratorio de Biología Molecular de Plantas, Facultad de Ciencias Agronómicas, Universidad de Tarapacá, Arica, Chile; <sup>d</sup>Centro Regional de Investigación y Desarrollo Sustentable de Atacama (CRIDESAT), Universidad de Atacama, Copiapó, Chile

### ABSTRACT

*Tillandsia marconae* Till & Vitek (Bromeliaceae) is a rare plant native species that grows over sand, in the coastal desert from Perú and Chile and is considered an endangered species. In this study, we assembled its chloroplast genome. The draft chloroplast genome of *T. marconae* is ca. 158,873 bp in length, containing a large single-copy region of 86,937 bp, a small single-copy region of 18,506 bp, and a pair of inverted repeat regions of 26,715 bp. The GC content of the draft chloroplast genome is 37.4%. It encodes a total of 135 genes, including 86 protein-coding genes, 38 tRNA genes, 8 rRNA genes, and three pseudogenes. The phylogenetic tree indicated that *T. marconae* is placed within the Bromeliaceae family and a close relationship with *Tillandsia usneoides* with 100% support.

### ARTICLE HISTORY

Received 25 January 2021  
Accepted 12 June 2021

### KEYWORDS

Chloroplast genome;  
*Tillandsia*

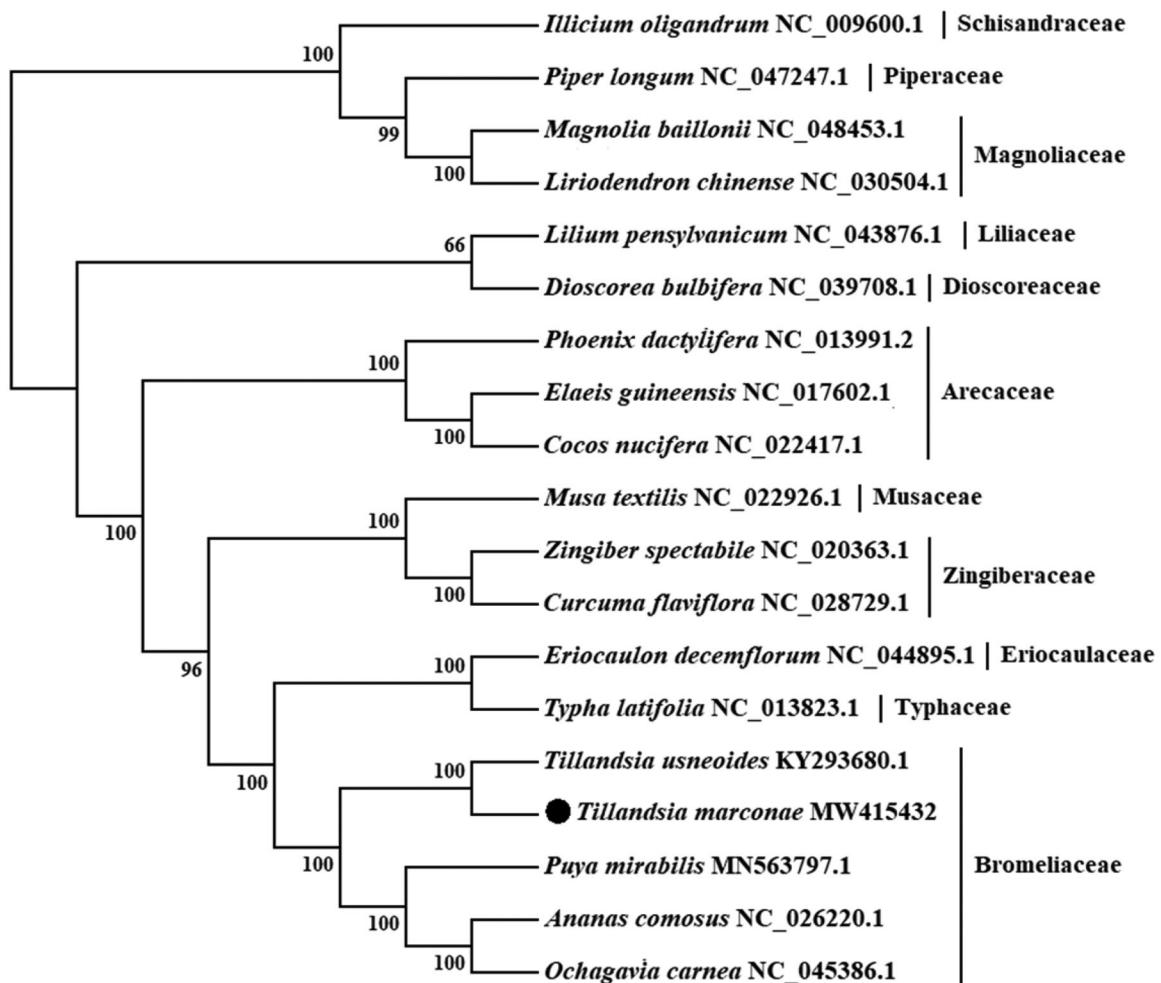
*Tillandsia marconae* Till & Vitek is a sandy, perennial herbaceous and rare species with a very particular distribution. It is found naturally only in two separated locations in the coastal desert of South America; Marcona hill (Departamento de Ica) in Central Perú and Pampa Dos Cruces (Región de Arica y Parinacota) in northernmost of Chile, which is part of Atacama Desert (Rundel and Dillon 1998; Pinto et al. 2006). This species has evolved a highly specialized growth habit, unrooted on the sand, and use the regular fog humidity to survive in hyperarid coastal zones and also due to its small population, it is considered as endangered species in both countries (Zizka et al. 2009; Whaley et al. 2019; MMA 2021). These reasons make it necessary to implement conservation strategies and develop tools to study this rare species' ecological and evolutionary aspects. So far, the chloroplast genome of *Tillandsia usneoides* within the genus *Tillandsia* has been reported only (Poczai and Hyvönen 2017).

In this study, we reported the draft chloroplast genome sequence of *T. marconae* as an initial approach toward developing genomic tools to understand this species and its close relatives. The sample of *T. marconae* was collected from Pampa Dos Cruces, Arica, Chile (18°28'43.48" S; 70°5'16.69" W). A specimen of *T. marconae* is deposited in the herbarium of Universidad de Concepción, Chile (<http://www2.udec.cl/~herbconc/>, Dra. Alicia Marticorena, [amartic@udec.cl](mailto:amartic@udec.cl)) under the voucher CONC-156141. Total genomic DNA was extracted from fresh leaves using the DNeasy Plant Mini Kit

(Qiagen, Hilden, Germany) following the manufacturer's instructions. DNA library was sequenced, and 150 pb paired-end were generated on an Illumina NovaSeq PE150 platform. After base quality control using FASTQC v01 (Andrews 2010), the remaining high-quality reads were used to assemble the chloroplast genome by SPAdes (Bankevich et al. 2012) and NOVOPlasty v01 (Dierckxsens et al. 2017), using *T. usneoides* chloroplast genome as a reference (KY293680). The chloroplast genome annotation was performed by GeSeq (Tillich et al. 2017).

The draft chloroplast genome sequence of *T. marconae* (GenBank accession number: MW415432) displays 158,873 bp in length with 37.4% CG content. It presents a quadripartite structure that contains a pair of inverted repeats (IR) regions (26,715 bp, GC content 42.7%), separated by a large single-copy (LSC) region (86,937 bp, GC content 35.3%) and a small single-copy (SSC) region (18,506 bp, GC content 31.5%). A total of 135 genes were predicted, including 38 tRNA genes (30 tRNA species), 8 rRNA genes (four rRNA species), 86 protein-coding genes (79 PCG species), and three pseudogenes (two pseudogene species).

To confirm the phylogenetic location of *T. marconae*, a maximum-likelihood tree was constructed with 1000 bootstrap replicates using IQ-Tree software (Nguyen et al. 2015) under GTR+I+G nucleotide substitution model, which was selected by Jmodeltest 2 (Darriba et al. 2012). The chloroplast genome of *T. marconae* was compared and aligned with other



**Figure 1.** Maximum likelihood (ML) tree based on chloroplast genome sequences of 19 species. Values along branches correspond to ML bootstrap percentages.

18 chloroplast genomes obtained from GenBank by the MAFFT version 7.475 software (Kato and Standley 2013), involving concatenation of 75 orthologue protein-coding genes. Four species from Bromeliaceae, three from Arecaceae, two from Zingiberaceae, and one each from Typhaceae, Eriocaulaceae, Musaceae, Liliaceae and Dioscoreaceae corresponding to Liliopsida class were included in the analysis, and with two species from Magnoliaceae, and one each from Piperaceae and Schisandraceae corresponding to Magnoliopsida class as out-group. As expected, *T. marconae* is placed under the Bromeliaceae family and closest to *T. usneoides* (Figure 1). The published *T. marconae* chloroplast genome provides useful information into conservation, phylogenetic and evolutionary studies for this desert plant species.

### Disclosure statement

No potential conflict of interest was reported by the author(s).

### Funding

This work was supported by Programa de Investigador Externo de la Universidad de Tarapacá, Convenio de Desempeño Regional UTA1795 and UTA1799; JCH-G was supported by Programa Nacional de

Innovación Agraria (PNIA), Carta de Entendimiento IICA-PNIA/Expertos [11115-P0048950000101, OGM 8].

### Data availability statement

The data that supports this study is openly available in Genbank of NCBI (<https://www.ncbi.nlm.nih.gov>) under the accession number MW415432. The associated Bioproject, Biosample and SRA numbers are PRJNA687917, SAMN17159914, and SRR14267567, respectively.

### References

- Andrews S. 2010. FastQC: A quality control tool for high throughput sequence data [Online]. <http://www.bioinformatics.babraham.ac.uk/projects/fastqc/>.
- Bankevich A, Nurk S, Antipov D, Gurevich AA, Dvorkin M, Kulikov AS, Lesin VM, Nikolenko SI, Pham S, Pribelski AD, et al. 2012. SPAdes: a new genome assembly algorithm and its applications to single-cell sequencing. *J Comput Biol.* 19(5):455–477.
- Darriba D, Taboada G, Doallo R, Posada D. 2012. jModelTest 2: more models, new heuristics and parallel computing. *Nat Methods.* 9(8):772.
- Dierckx N, Mardulyn P, Smits G. 2017. NOVOPlasty: de novo assembly of organelle genomes from whole genome data. *Nucleic Acids Res.* 45(4):e18.
- Kato K, Standley DM. 2013. MAFFT multiple sequence alignment software version 7: Improvements in performance and usability. *Mol Biol Evol.* 30(4):772–780.

- MMA. 2021. Inventario nacional de especies de Chile. Ministerio del Medio Ambiente. [http://especies.mma.gob.cl/CNMWeb/Web/WebCiudadana/ficha\\_indepen.aspx?EspecieId=927&Version=1](http://especies.mma.gob.cl/CNMWeb/Web/WebCiudadana/ficha_indepen.aspx?EspecieId=927&Version=1).
- Nguyen L-T, Schmidt HA, von Haeseler A, Minh BQ. 2015. IQ-TREE: a fast and effective stochastic algorithm for estimating maximum-likelihood phylogenies. *Mol Biol Evol.* 32(1):268–274.
- Pinto R, Barría I, Marquet PA. 2006. Geographical distribution of *Tillandsia lomas* in the Atacama Desert, northern Chile. *J Arid Environ.* 65(4): 543–552.
- Poczai P, Hyvönen J. 2017. The complete chloroplast genome sequence of the CAM epiphyte Spanish moss (*Tillandsia usneoides*, Bromeliaceae) and its comparative analysis. *PLoS One.* 12(11): e0187199.
- Rundel PW, Dillon MO. 1998. Ecological patterns in the Bromeliaceae of the lomas formations of Coastal Chile and Peru. *Pl Syst Evol.* 212(3–4): 261–278.
- Tillich M, Lehwark P, Pellizzer T, Ulbricht-Jones ES, Fischer A, Bock R, Greiner S. 2017. GeSeq - versatile and accurate annotation of organellar genomes. *Nucleic Acids Res.* 45(W1):W6–W11.
- Whaley O, Orellana-García A, Octavio Pecho-Quispe J. 2019. An annotated checklist to vascular flora of the Ica Region, Peru—with notes on endemic species, habitat, climate and agrobiodiversity. *Phytotaxa.* 389(1):1–125.
- Zizka G, Schmidt M, Schulte K, Novoa P, Pinto R, König K. 2009. Chilean Bromeliaceae: diversity, distribution and evaluation of conservation status. *Biodivers Conserv.* 18(9):2449–2471.